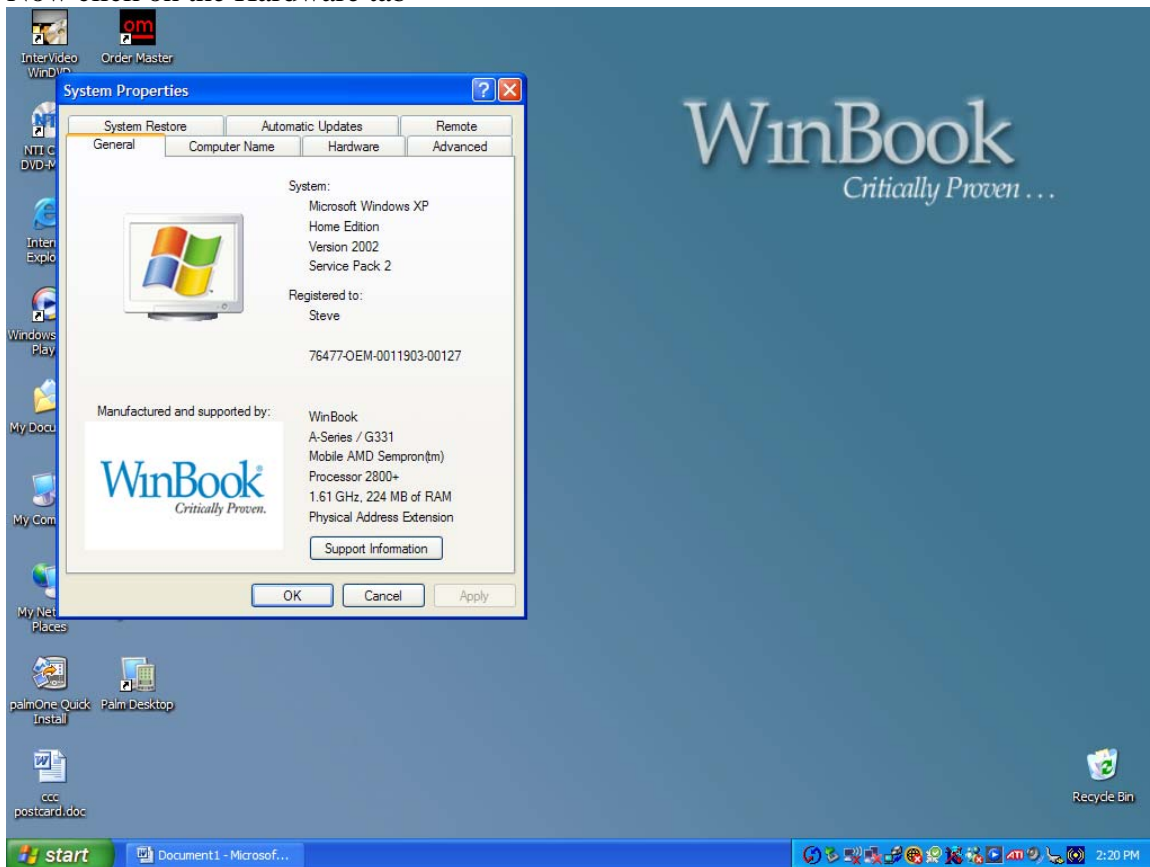


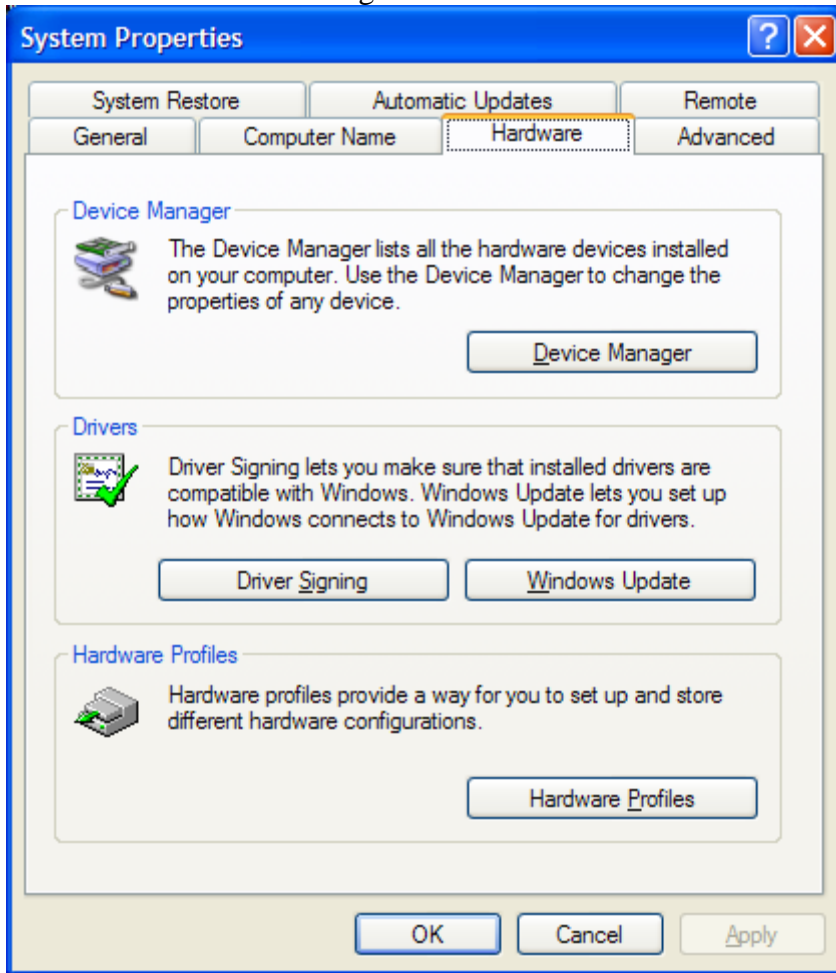
Right click on My Computer Icon on Desktop. Then click on Properties



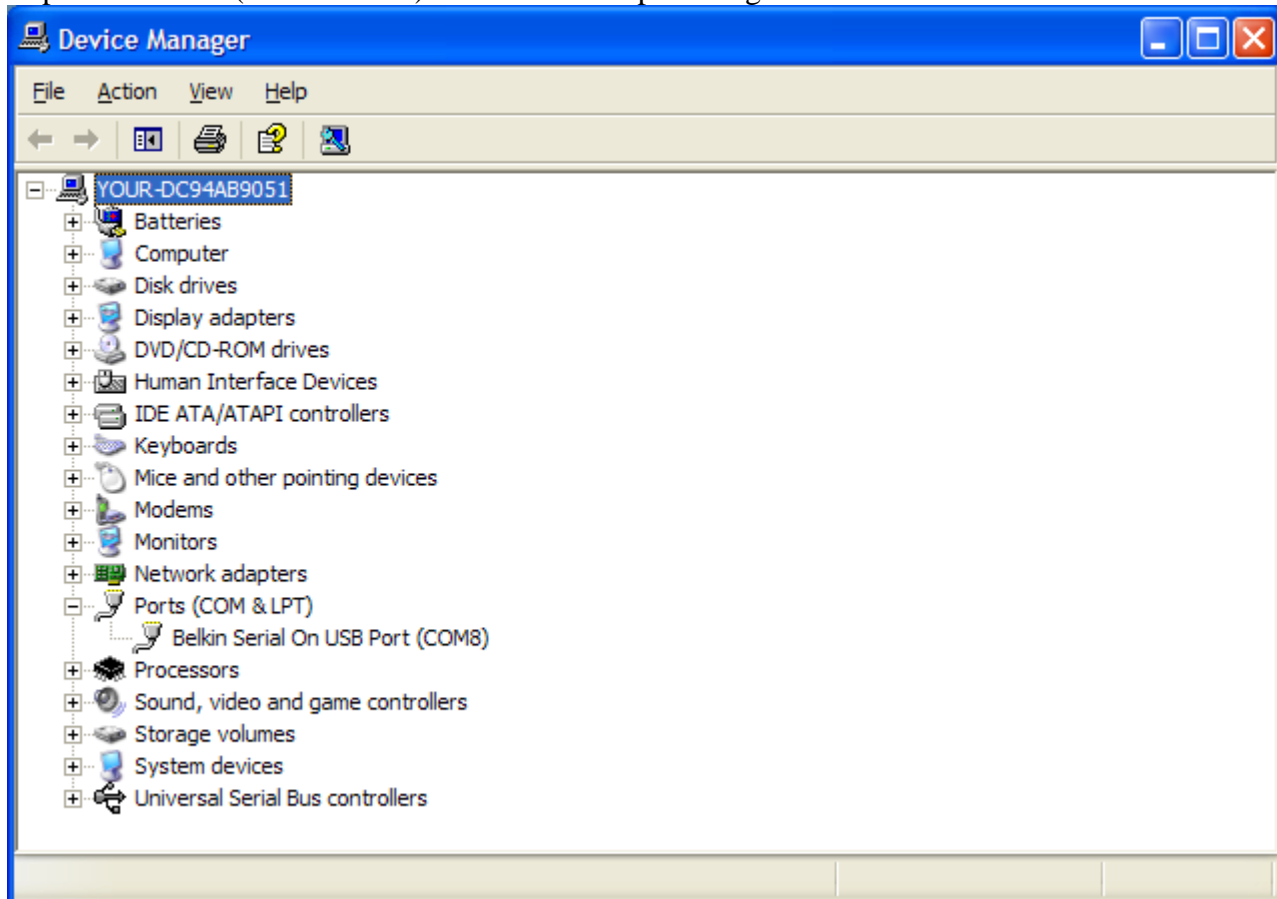
Now click on the Hardware tab



Now click on Device Manager button



Expand the Ports (COM & LPT)—Note the com port assigned to Belkins – Com 8 here



Close all windows. Right click Hot Sync Manager Red and Blue Circle running in the System Task Bar At the bottom of the screen. Click Setup. Click on Local tab and set the com port to the correct setting. Here it is 3 and needs to be set to 8.

